



COMMITTEES

INFORMATION BROCHURE



TABLE OF CONTENTS

Preface	2
Practical Information	3
Overview Committees	5
International Development Project Committee	5
Lustrum Committee	5
Women In Business Committee	6
Active Members Committee	7
Activity Committee	7
Consultancy and Commercial Committee	7
Economic Tour Committee	8
First Year Committee	8
International Committee	9
TEDx Committee	9
Yearbook Committee	9
EBF Conference Day Organisation Committee	10
ESR Fall Committee	10
Introduction Committee	11
Sports Committee	11
Master Committees	12
Social Responsibility Community	12
Executive Boards	13
EBF Board	15

PREFACE

Dear student,

Welcome to EBF Groningen, the study association dedicated to all students of the Faculty of Economics and Business. Whether you are following a bachelor or master program, international or Dutch, EBF is your gateway to connecting study, career, social, and international experiences.

At EBF, we believe that your time at university is about more than just lectures and exams. It is a unique opportunity to build a network, develop essential skills, and create memories that will last far beyond your student time. By joining EBF, you will enhance your personal and professional growth in an inspiring and supportive community.

Throughout the year, EBF organises a wide range of activities that cater to the four pillars of our association: Study, Career, Recreation, and Internationalization. From workshops and study support to career events with major employers, from social gatherings to international projects and trips, there is something for everyone!

As an active member, you will gain valuable organisational and leadership skills that prepare you for your future career. Moreover, you will meet like-minded peers from all over the world, expanding your cultural understanding and global network. Furthermore, by becoming an active member, you get to go on our yearly Active Members Weekend and join the Active Members Day. Here, you can connect with your fellow active members and expand your social network.

We invite you to make the most of your university experience by becoming part of EBF. Together, we will learn, grow, and celebrate, and we look forward to welcoming you as an active member of the EBF community!

**Kind regards,
Marit Zijlstra, Chairman of the 20th EBF Board**

PRACTICAL INFORMATION

APPLICATION PERIOD

At EBF, we have two application periods for most of our Committees, which can be found on the next page. These Committees last for one year. Other Committees are open all year to join. These Committees are all Master Committees and the Social Responsibility Community. You can take a look at the EBF Website (www.ebfgroningen.nl/recruitment) to see which Committees there are, which functions there are, and much more. On our site, you can use different filters to select which Committee suits you best!

BENEFITS OF DOING A COMMITTEE

There are many different benefits of doing a Committee at EBF. First of all, you get the chance to meet new people and make new friends. You will not only get to know your Committee Members, but also fellow Active Members. We have about 180 Active Members! Another benefit is the chance to develop new skills. You can for example learn how to organise an event, or how to work with different programs to make promotional material. You can also learn how to contact businesses and much more! EBF organises events exclusively for Active Members, which you can join as Active Member. It is the perfect opportunity to network with both your fellow students and companies.

On the following pages, you can find all the EBF Committees you can apply for this year. Furthermore, the responsibilities and tasks of each Committee are included. You can apply for EBF Committees for 2026-2027 four times this year. On the next page, you can find which Committees you can apply for and when. In addition, the weekly workload in hours is indicated. For the Committees marked with a star (*), **fluency in Dutch is required**. All the other Committees are open to internationals. Weekly workloads that are marked with two stars (**) have an **increasing workload** as the event approaches.

COMMITTEE	HOURS/WEEK
MAY RECRUITMENT	
International Development Project Committee	10-20
Lustrum Committee	10-20**
JULY RECRUITMENT	
EBF/MARUG Recruitment Days Executive Board*	25-30**
Women In Business Committee	10-20**
SEPTEMBER RECRUITMENT	
Active Members Committee	3-5
Activity Committee	3-5
Consultancy and Commercial Committee*	5-10
Economic Tour Committee	3-5
First Year Committee	3-5
International Committee	3-5
TEDx Committee	10-20**
Yearbook Committee	3-5
EBF Conference Executive Board*	20-40**
FEBRUARY RECRUITMENT	
EBF Conference Day Organisation Committee	10-20**
ESR Fall Committee	10-20
Introduction Committee	5-10
Sports Committee	5-10
International Business Research Executive Board	20-40
APPLY ALL YEAR	
Master Committees	3-5
Social Responsibility Community	3-5

OVERVIEW COMMITTEES

MAY RECRUITMENT

INTERNATIONAL DEVELOPMENT PROJECT COMMITTEE

The International Development Project organises an international research project on another continent. This year, the Committee will organise the international research project for the third time, and this will run in Stellenbosch, South Africa. Here, a group of 15 students will conduct a two-week research with the goal of providing local companies with advice on how to improve their sustainable practices. After these first two weeks, the participants are free to travel themselves for another two weeks before the whole group returns to Groningen. With your Committee, you are responsible for the contact with the University, for the logistics at the chosen location and for the facilitation of proper research. In addition, you will organise weekly dinners and socials in the weeks leading up to the trip.

LUSTRUM COMMITTEE

The EBF Lustrum is a special milestone celebrated once every five years, marking an important chapter in the association's history. It is a year filled with unique experiences, bringing together members, alumni, and partners to celebrate the EBF's achievements, traditions, and future ambitions. Throughout the Lustrum year, a wide variety of study, career, and social events are organised, offering something for everyone within the EBF community. The Lustrum Committee is responsible for bringing this celebration to life. The committee creates a diverse and memorable program that reflects the spirit of the EBF. Their goal is to make the Lustrum an extraordinary year and a lasting memory for all those involved.

JULY RECRUITMENT

WOMEN IN BUSINESS COMMITTEE

Women in Business is a career event that connects ambitious female students with inspiring role models and leading companies. As a member of the Women in Business Committee, you will organise the event by approaching speakers and companies, shaping the programme and ensuring everything runs smoothly on the day itself. During the event, female students gain inspiration from female professionals, hear their personal career stories and connect with companies through an interactive networking session. Since the event is scheduled for February, your role and responsibilities will span the period from July to February.



SEPTEMBER RECRUITMENT

ACTIVE MEMBERS COMMITTEE

Each year, around 180 students join an EBF Committee. The Active Members Committee makes sure these members also connect outside of their roles by organising informal events. Highlights include the New Active Members Day, Christmas Dinner, Running Dinners, and the Smartest Member Pubquiz. As a member of this Committee, you'll meet all active members and gain experience in organising events for a large and diverse group. A great way to stay involved and contribute to the EBF community.

ACTIVITY COMMITTEE

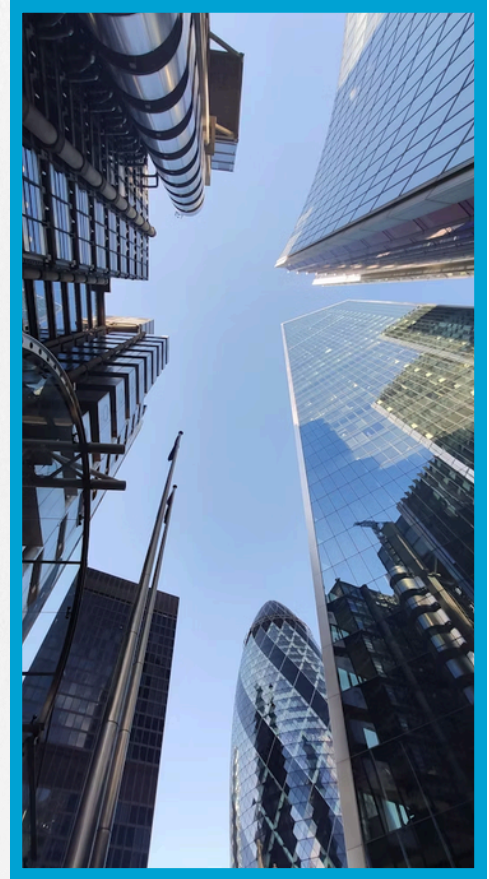
The Activity Committee is responsible for most of our informal activities, including the EBF x JFV Christmas Ball and the EBFestival. You will organise 5 informal events at Wolter Wolthers, each event you and your Committee will be responsible for decorating the Wollie! Besides these events, the Activity Committee will also organise the big Mid-Year Party and, of course, the EBFestival. As a member of the Activity Committee, you will be responsible for making all events a success for all our members!

CONSULTANCY AND COMMERCIAL COMMITTEE

The Consultancy & Commercial Committee is perfect for students eager to gain experience in event organisation and company relations. You will organise the annual two-day EBF Consultancy Tour, where 25 selected students visit top consultancy firms in Amsterdam through presentations, cases, and workshops. The Committee also manages company contacts in Groningen, acquires deals for the EBF Discount Card, and organises the yearly EBF Fundraiser. Joining this Committee is a unique chance to develop your skills in project management, communication, and acquisition.

ECONOMIC TOUR COMMITTEE

The Economic Tour Committee is responsible for organising the Economic Tour for first-year Economics and Business Economics students. This tour will take place at the beginning of the second semester and offers participants a unique opportunity to explore the professional world. During the tour, first-year students will visit a variety of companies in Groningen and the Randstad, gain insight into different industries, and discover valuable career insights. Together with your Committee, you will be responsible for arranging company visits (in collaboration with the FEB), planning the programme, and ensuring that every part of the tour runs smoothly. As a member of the Economic Tour Committee, you will develop your organisational and networking skills while creating an unforgettable experience for the first-years.



FIRST YEAR COMMITTEE

The First Year Committee is responsible for organising an event for first-year students. This event will help new students get to know each other and settle into the student life. Think of a cocktail workshop, bowling night, or another fun event. As a Committee you're free to come up with your own idea! You'll also be in charge of organising the EBF First Year Trip to Antwerp! This trip is a great chance to explore a new city, connect with other students, and enjoy student life. Through this experience, you'll meet new people, develop useful organisational and leadership skills, and create memorable moments for yourself and your fellow students.

INTERNATIONAL COMMITTEE

The International Committee helps integrate Dutch and international students at FEB by organising activities such as EBF International Day, with cultural workshops and a global food market, as well as informal events to build connections. New this year is the International Ambassador, who works with the EBF Board to bridge the gap between international and Dutch students. Do you have an international mindset? Then this Committee is perfect for you!



TEDX COMMITTEE

Ever dreamed of putting ideas worth spreading on stage? As a member of the TEDx Committee, you will bring the iconic red circle to Groningen! Together with your Committee, you are responsible for every part of the event: scouting inspiring speakers, developing a bold theme, and arranging the venue, promotion, and logistics. On the night itself, you'll watch a packed room hang on every word of the talks you made happen. Along the way, you will sharpen your skills in professional communication, event organisation, and creative thinking. Do you want to give Groningen an evening it won't forget? Then the TEDx Committee is made for you!

YEARBOOK COMMITTEE

Yearbook, the best way to lookback at the EBF year. Are you creative and want to design the EBF Yearbook special for her Active Members? Apply for this Committee. You will be involved with all Active Members, and you can be their Gossip Girl by gathering all the gossip about EBF's Active Members. You can design the book yourselves and think of the content you want to create!

FEBRUARY RECRUITMENT

EBF CONFERENCE DAY ORGANISATION COMMITTEE

Ready to gain insights in the biggest two-day Conference of the Netherlands? Then the EBF Conference Day Organisation Committee is something for you! You will gain experience in contacting companies, logistical processes and promotional activities. The two Conference Days have a different character, and as the Day Organisation you will be responsible for several elements of both days. You will work closely together with the EBF Conference Executive Board and are mainly responsible for the College Day.

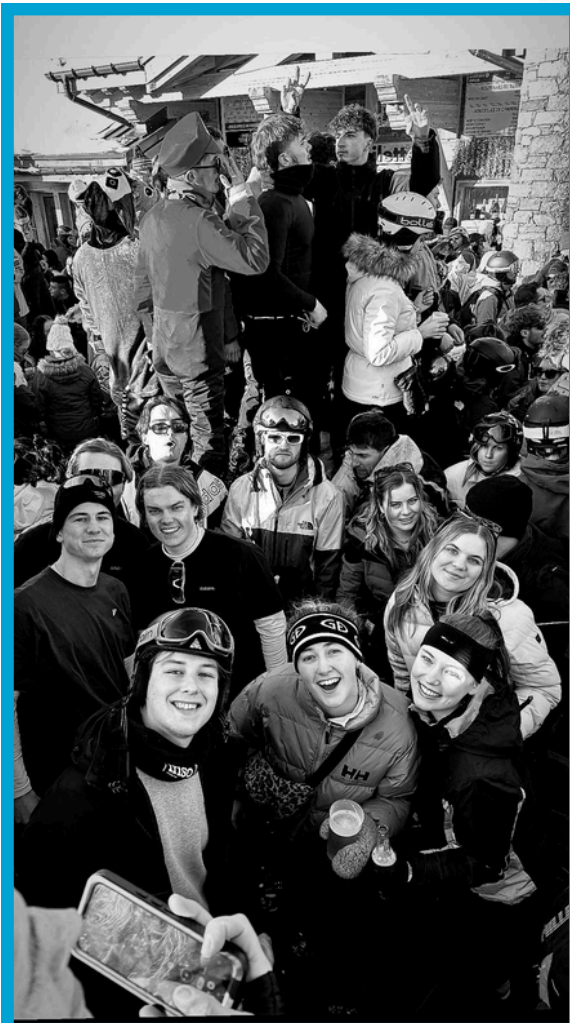


ESR FALL COMMITTEE

The EBF organises one European Study Research trip in the year 2026-2027. In november. The trip is organised by its own Committee, which selects the destination and research theme. Together with 25 enthusiastic second- and third-year students, you will conduct research and visit companies in the chosen city. The research will be prepared through lectures over a 7- week period before the trip and will be completed in the 3 weeks following the trip. Additionally, you will organise weekly dinners and socials with all the participants to keep the group connected. During the trip, it is your responsibility as a Committee to find the perfect combination of research, company visits, cultural experiences, and, of course, fun!

INTRODUCTION COMMITTEE

Every year, the EBF Introduction Weekend takes place for all new first year FEB students. Your Committee will organise an amazing three day camp to introduce the first years to the EBF and to each other. Approximately 200 first-year students will join the introduction weekend, and during the summer, you will be busy planning fun, interactive activities, organising great parties and ensuring the entire weekend is unforgettable! This Committee will teach how to organise a big 3-day event, meet a lot of new people and gain a lot of new experiences.



SPORTS COMMITTEE

The EBF Sports Committee organises several fun, sport-related events throughout the year. First of all, the Committee is responsible for the participation of the EBF in the largest student sport event of the Netherlands; the Batavierenrace and the annual EBF Ski Trip. You will be responsible for the contact with both the organisation and participants, the promotion, and logistics of these trips. Additionally, you will have the freedom to organise a creative sport event of your choice. This could be anything from a climbing workshop to a mud race! Do you have a passion for sports and organising events? Then join the Sports Committee!

APPLY ALL YEAR

MASTER COMMITTEES

Our Master Committees are responsible for organising events specifically for their respective (pre-)master. You will organise both formal events, such as in-house days and workshops, and informal events, such as socials and dinners. The goal is to create a strong community feeling within a master programme and to help students get in contact with companies and with each other. The Master Committees have much freedom to organise the events they feel are interesting for their respective master. Thereby, you will be creative, will have much responsibility, and will work together. Since you will also organise formal events, you will get in contact with many companies. Furthermore, there are possibilities to organise seminars, with which you can gain experience in contacting speakers. And by organising informal events, you will help fellow students to get to know each other and build a strong social network! The EBF has the following Master Committees: MC Change, MC International Economics & Sustainable Development, MC Economics, MC BA Health, MC Human Resource Management, MC International Business & Management, MC Small Business & Entrepreneurship, MC Strategic Innovation Management.

SOCIAL RESPONSIBILITY COMMUNITY

Are you passionate about sustainability, diversity, and giving back to society? Then the Social Responsibility Community (SRC) is the place for you! As a member of the SRC, you'll have the opportunity to make a meaningful impact on EBF and the wider community. You'll be involved in projects such as the FEB Diversity Month, the EBF Fundraiser, and EBF Green Week, a week full of fun challenges and activities to raise awareness for sustainability among students. You will also help shape EBF's diversity and inclusion policies in close collaboration with the EBF Project and Inclusion Officer. The SRC will operate as an open community, which means you can join at any point during the year if you're interested in contributing! Do you want to take initiative and make a difference? Then the Social Responsibility Community is the place to be!

EXECUTIVE BOARDS

EBF CONFERENCE

As a member of the EBF Conference Executive Board, you will organise the largest two-day student conference in the Netherlands. The first day, College Day, offers academic perspectives with professors, alumni, and corporate participants. The second day, Conference Day, welcomes 500+ students for lectures, workshops, and masterclasses by renowned speakers and professionals. Past speakers include Al Gore, Klaas Knot, and CEOs from HEINEKEN, Coca-Cola, and PwC. Your tasks include developing the theme, contacting speakers, acquiring companies, and arranging the event organisation. The board starts in November (~15 hours/week), increasing to nearly full-time in the second semester, supported by the Conference Day Organisation Committee from February. This year, two positions are also open for international students.



EBF X MARUG RECRUITMENT DAYS

Organise the biggest recruitment event in the North of the Netherlands while developing your professional and organisational skills. Each December, around 400 students meet 30+ companies during presentations, interviews, cases, and networking events. As a board member, you will contact companies, arrange logistics, design the program and promotion materials, and ensure a smooth, impactful event. Work with five fellow students, expand your network, and gain valuable experience.



INTERNATIONAL BUSINESS RESEARCH

International Business Research (IBR) is a student-led project by the EBF and University of Groningen, where students conduct research for Dutch companies in two growing economies outside Europe. After a year of preparation with seven fellow Executive Board members and IBR participants, you travel to the destination countries for 5 weeks of research, followed by 5 weeks of travel. Past destinations include Vietnam, India, China, Brazil, and South Africa. A year on the IBR Executive Board offers unique international research experience, networking with companies, CV-boosting opportunities, and plenty of social events.

EBF BOARD

The Committees and Executive Boards are guided by different Board Members. Besides the Board Member that helps the whole Committee, they also give functional guidance for the different positions. For example, the treasurer of the EBF Board guides the treasurers of the Committees. within the board, eight people fulfill eight positions: Chairman, Vice-Chairman, Secretary & HR Officer, Treasurer, IT & Marketing Officer, Commercial Officer, Project & Inclusion Officer and the Career Officer.



INTERESTED IN A BOARD YEAR AT EBF?

A board year at the EBF means a year full of new experiences and insights. As a board member of the EBF you will gain a lot of experience in one year; one year of challenges in strategic thinking, working in a team and motivating others. A board year at the EBF is multidimensional, challenging and very informative. After your board year, you can take your knowledge with you in your future career. You will experience a year you will never forget. The EBF Board will be recruited in March.

THE EBF BOARD

2026-2027

As the 20th EBF Board, we are looking forward to see you as Active Member next year.
If you have any questions, don't hesitate to contact us!



Marit Zijlstra
m.zijlstra@ebfgroningen.nl **CHAIRMAN**

Martijn Goedemoed
m.goedemoed@ebfgroningen.nl **VICE-CHAIRMAN**

Anne Hoiting
a.hoiting@ebfgroningen.nl **SECRETARY & HR OFFICER**

Rutger Pentenga
r.pentenga@ebfgroningen.nl **TREASURER**

Britt Stamsnieder
b.stamsnieder@ebfgroningen.nl **IT & MARKETING OFFICER**

Jan Pieter Wiersema
j.wiersema@ebfgroningen.nl **COMMERCIAL OFFICER**

Marlijn Blekkenhorst
m.blekkenhorst@ebfgroningen.nl **PROJECT & INCLUSION OFFICER**

Tjerk Kamsma
t.kamsma@ebfgroningen.nl **CAREER OFFICER**



**YOUR PARTNER IN
STUDY AND CAREER**

WEBSITE www.ebfgroningen.nl

E-MAIL info@ebfgroningen.nl

SOCIALS @ebfgroningen

 **marug**
Marketing Association University of Groningen

 **FS-G**
Financial Study Association Groningen

 **VESTING**

 **te/ma** study association